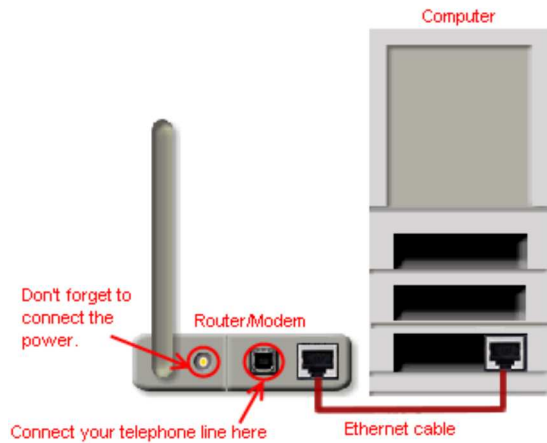


VANILLA - internet services, simple.

How to setup Vanilla ADSL on the Shiro DSL805EU ethernet modem/router

Before you begin

Please ensure that your modem/router is connected to your telephone line by a telephone cable and your computer is connected to your modem/router with a LAN cable. The difference between a telephone cable and a LAN cable can be seen [here](#). Also, you need to connect your router to its power supply and its power supply to a free two-prong socket.



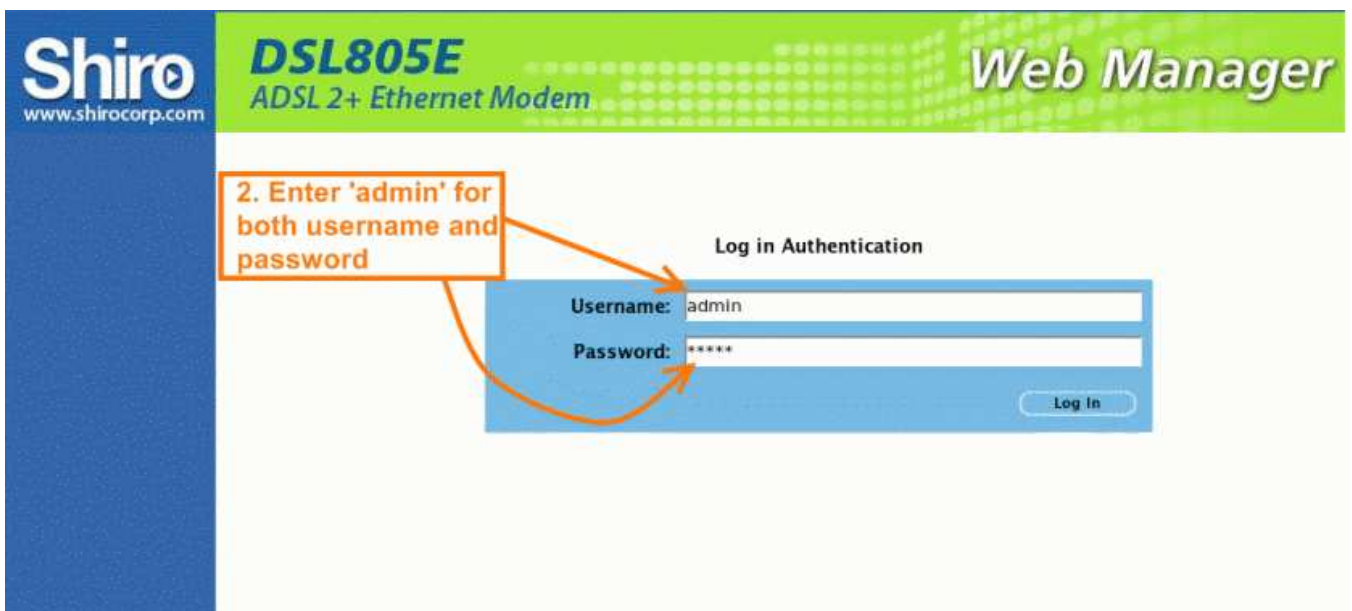
STEP ONE: Log into the router from your computer

You will need to have a working network card or port with a computer attached in order to connect to the ADSL router. These instructions assume the default router setup, if they do not work, call us or your IT support person. This guide assumes that you have set up all the physical connections. Check that the power, LAN and DSL lights are all on and solid. If not, [call us](#) to troubleshoot.

1. Open a browser (Internet Explorer, Mozilla Firefox etc.) and type `http://192.168.1.1` in the address bar



2. The browser should ask you for username and password, use username: `admin` and password: `admin` (these are the default for Shiro routers, refer to your manual if they don't work). We strongly advise that you change these once you've accessed your router.



STEP TWO: Creating a new connection

Hover your mouse over *WAN* (under *Advanced* on the left of your screen) and click: **New Connection**

The screenshot shows the Shiro DSL805E Web Manager interface. The left sidebar has a menu with 'Basic' and 'Advanced' sections. Under 'Advanced', 'WAN' is highlighted, and 'New Connection' is selected. The main content area shows the 'WAN Account Settings' form with fields for 'Username' and 'Password', and a 'Connect' button. Two orange callout boxes with arrows point to the 'WAN' menu item and the 'New Connection' option.

STEP THREE: Configuring your connection

On the configuration page (see below) you will have to fill in a few details. You only need to change the values specified - leave all the others as they are.

1. Connection Name: [whatever you want]
2. Username: [whatever we've given you, eg. account@unshaped.chocolate.co.za]
3. Password: [whatever we've given you]
4. VPI: 8
5. VCI: 35

Click *Submit* to save settings, then *Connect* to connect.

The screenshot shows the 'Advanced > WAN > New Connection' configuration page. The 'PPPoE Connection' section has fields for 'Connection Name' (Vanilla), 'Type' (PPPoE), and 'Sharing' (Disable). The 'PPP Settings' section has fields for 'Encapsulation' (LLC VC), 'Username' (ped.chocolate.co.za), 'Password' (*****), 'Idle Timeout' (60 secs), 'Keep Alive' (10 min), 'Authentication' (Auto), and 'MTU' (1492 bytes). The 'PVC Settings' section has fields for 'PVC' (New), 'VPI' (8), 'VCI' (35), 'QoS' (UBR), 'PCR' (0 cps), and 'SCR' (0 cps). Four orange callout boxes with arrows point to the 'Connection Name' field, the 'Username' and 'Password' fields, the 'VPI' field, and the 'VCI' field.



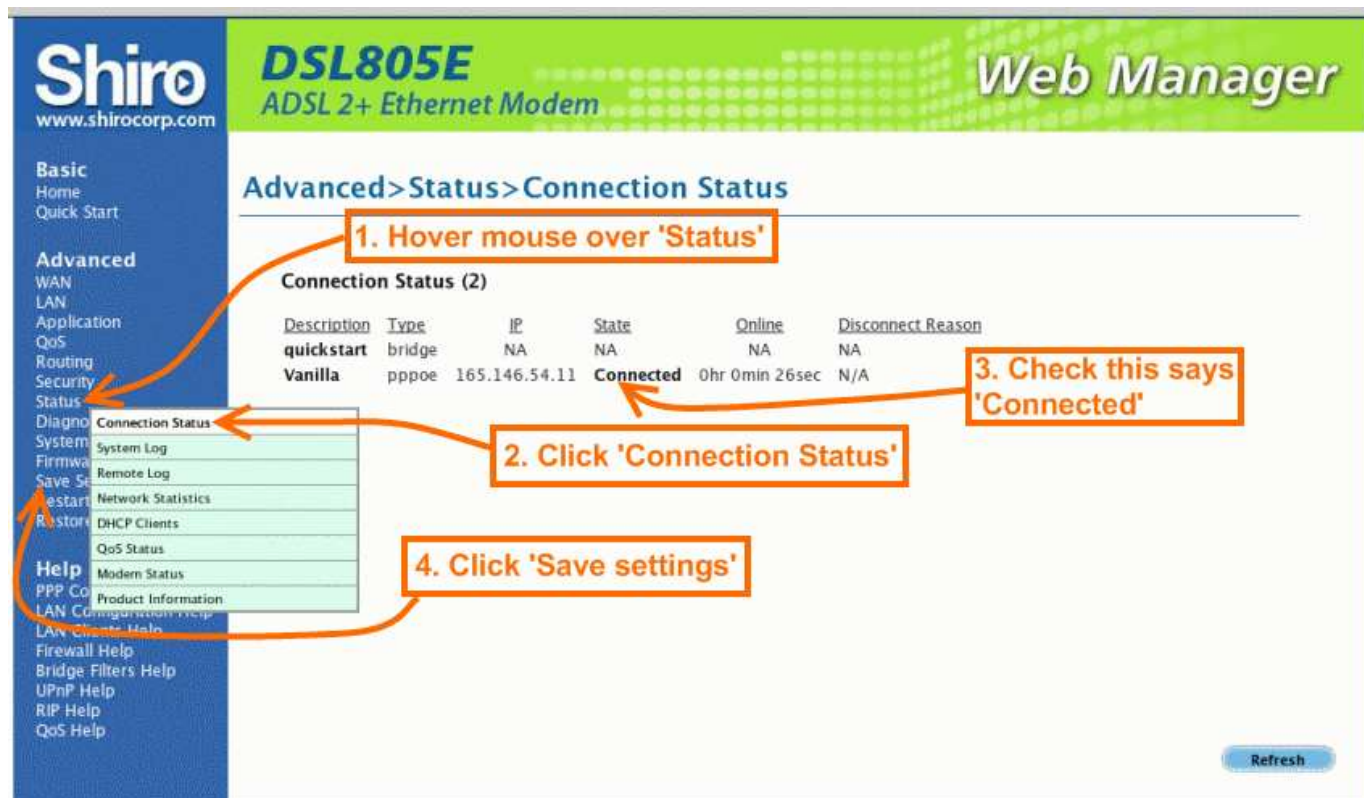
STEP FOUR: Making sure you're connected

Hover your mouse over *Status* and click *Connection Status*. You will be presented with a summary of the profiles you created and saved.

Check that it says, "**Connected**" below *State*.

If so, then congratulations, you've successfully configured your Shiro DSL805EU modem/router.

NB Make sure that you click *Save settings* on the left hand panel or else if you turn your router off, you will lose all progress made and will have to setup the router again... Enjoy surfing!



STEP FIVE: Cleaning up

This step is only necessary for advanced users who intend to use the interface regularly

If you click on *WAN* and select the *quickstart* pre-defined profile, you can delete this "connection" by clicking *Delete* in the bottom right hand corner. This will now make your *Vanilla* Connection the ONLY profile available to the modem/router. When this is the case, clicking on *Home* on the left panel will bring up a neat summary of your Connection, Router and LAN information which is very useful. Once again, click *Save settings* to make you don't lose any changes you've made.

VANILLA is a trading name of Future Perfect Corporation (Level 1 certified BBBEE company)

Vanilla Support or contactus at vanilla.co.za or 086 11 22 345

